

# **GMS Psycho-Social-Medicine**

[www.p-s-m.org](http://www.p-s-m.org)

***E-journal***

***of 11 German Scientific Societies of  
Psychosocial Medicine***

*within German Medical Science,  
the scientific publication platform of the  
Association of the Scientific Medical  
Societies in Germany (AWMF)*

# Beteiligte Fachgesellschaften

- Dt. Ges. Psychotraumatologie (DeGPT)
- Dt. Ges. Biologische Psychiatrie (DGBP)
- Dt. Ges. ärztliche Hypnose (DGÄHAT)
- Dt. Ges. Kinder- und Jugendpsychiatrie (DGKJP)
- Dt. Ges. Medizinische Psychologie (DGMP)
- Dt. Ges. Medizinische Soziologie (DGMS)
- Dt. Ges. Psychosomatische Medizin (DGPM)
- Dt. Ges. Psychiatrie, Psychoth., Nervenheilk. (DGPPN)
- Dt. Ges. Psychoanalyse, Psychoth., Psychos. (DGPT)
- Dt. Ges. Verhaltensmedizin (DGVM)
- Dt. Kollegium Psychosomatische Medizin

## **Editor-in-Chief**

**Prof. Dr. Jörn von Wietersheim**

Dept. of Psychosomatic Medicine

and Psychotherapy

University of Ulm

Am Hochsträß 8

D-89081 Ulm, Germany

[joern.vonwietersheim@uniklinik-ulm.de](mailto:joern.vonwietersheim@uniklinik-ulm.de)

## **Associate Editors-in-Chief**

**Prof. Dr. Renate Deinzer**

[Renate.Deinzer@psycho.med.](mailto:Renate.Deinzer@psycho.med.uni-giessen.de)

[uni-giessen.de](http://uni-giessen.de)

**Prof. Dr. Wolfgang Gaebel**

[gaebel@uni-duesseldorf.de](mailto:gaebel@uni-duesseldorf.de)

## **Editorial Office**

c/o

Deutsche Zentralbibliothek für Medizin

Gleueler Str. 60

D-50931 Köln (Cologne), Germany

[www.zbmed.de](http://www.zbmed.de)

# Struktur und Entwicklung

- Gegründet Dez. 2003 als nicht eingetragener Verein, Vereinsmitglieder Fachgesellschaften, Beitrag nach Anzahl der Mitglieder in den Gesellschaften.
- Die Beiträge finanzieren (bisher) Honorare für einen Teilzeit-Redaktionsmitarbeiter sowie die Publikationskosten (270,- pro Artikel)
- Redaktionsmitarbeiter überprüft die Artikel auf formale und methodische Aspekte, hält Kontakt zu Reviewern und Autoren
- ZbMed sorgt für die Herstellung und Onlinestellung sowie Speicherung der Artikel
- Satzung, Geschäftsordnung der Schriftleitung, jährliche Herausgebersitzung, Telefonkonferenzen
- Elektronisches Manuskripteinreichungssystem (MOPS)
- Gelistet in: DIMDI, DOAJ, EBSCO Academic Search, JournalSeek, MEDPILOT, Open J-Gate, PsycINFO, PubMed, PubMed Central, Socolar, Scopus
- Medline-Listung wird im Juli 2011 erneut entschieden.
- Fernziel: Impact-Faktor

## What is GMS Psycho-Social-Medicine?

GMS Psycho-Social-Medicine (p-s-m) is an open access e-journal, which publishes articles from the whole area of psychosocial research in medicine. It is edited on an interdisciplinary level by eleven German scientific societies from the areas of behavioral medicine, medical psychology and sociology, psychiatry, psychosomatic medicine, and psychotherapy. p-s-m offers all scientists from the field of psychosocial medicine the possibility to publish their research online.

### Only high-ranking and quality reviewed articles are accepted for publication.

All accepted articles are published in English. They are available online for anyone interested: immediately, permanently and free of charge.



### Copyright

All authors keep the copyright for articles published in p-s-m. This means the publicity rights remain with the authors, enabling them to make further use of the article in future.

### New Media

Discover a new way of presenting your study results! Add pictures, graphs, audio effects and primary data to your article.

[www.p-s-m.org](http://www.p-s-m.org)

### Why choose p-s-m?

- Quick publicity; quick access.
- International transfer of information.
- Participation in international data bases.
- Long time storage.
- Distribution of articles – free of charge.
- Access to the original data of articles.
- Open discussions about the papers, online forums and newsgroups.
- Report of the number of persons reading your article, an alternative to the impact factor.
- You keep the copyright.
- Listed in PubMed, PsycInfo and the Directory of Open Access Journals ([www.doaj.org](http://www.doaj.org));

### Manuscript submission

Manuscripts can be submitted online via the Manuscript Operating System (MOPS). E-mail addresses of the editors and instructions for authors can be found on the Journal website [www.p-s-m.org](http://www.p-s-m.org). All articles undergo a peer-review process to assure high scientific quality.



Search: PubMed  
Psychosoc Med  
Search Clear

Display Settings: Summary, 20 per page, Sorted by Recently Added

Send to:

Filter your results:

Results: 1 to 20 of 72

<< First < Prev Page 1 of 4 Next > Last >>

- All (72)
- Free Full Text (72)
- Review (0)

Manage Filters

[Neural correlates of the perception of dynamic versus static facial expressions of emotion.](#)

1. Kessler H, Doyen-Waldecker C, Hofer C, Hoffmann H, Traue HC, Abler B.  
Psychosoc Med. 2011 Apr 20;8:Doc03.  
PMID: 21522486 [PubMed - in process] Free PMC Article  
[Free full text](#) [Related citations](#)

[Recurrent abdominal pain in children and adolescents - a survey among paediatricians.](#)

2. Schlarb AA, Gulewitsch MD, Bock Genannt Kasten I, Enck P, Hautzinger M.  
Psychosoc Med. 2011 Mar 28;8:Doc02.  
PMID: 21468324 [PubMed - in process] Free PMC Article  
[Related citations](#)

[Mental strain among staff at medical rehabilitation clinics in Germany.](#)

3. Koerner M.  
Psychosoc Med. 2011 Jan 20;8:Doc01.  
PMID: 21289992 [PubMed - in process] Free PMC Article  
[Free full text](#) [Related citations](#)

[Low effective organizational strategies in visual memory performance of unmedicated alcoholics during early abstinence.](#)

4. Daig I, Mahlberg R, Schroeder F, Gudlowski Y, Wrase J, Wertenuer F, Bschor T, Esser G, Heinz A, Kienast T.  
Psychosoc Med. 2010 Dec 14;7:Doc07.  
PMID: 21160546 [PubMed - in process] Free PMC Article  
[Free full text](#) [Related citations](#)

[Suicidality, depression, major and minor negative life events: a mediator model.](#)

5. Hardt J, Johnson JG.  
Psychosoc Med. 2010 Sep 22;7:Doc05.  
PMID: 21139987 [PubMed - in process] Free PMC Article  
[Free full text](#) [Related citations](#)

[Six-year follow-up of patients with functional bowel disorders, with and without previous psychotherapy.](#)

6. Martens U, Caspari G, Riik A, Hefner J, Teufel M, Klosterhalfen S, Zipfel S, Enck P.  
Psychosoc Med. 2010 Sep 22;7:Doc06.

72 free full-text articles in PubMed Central

- Neural correlates of the perception of dynamic versus static facial expre [Psychosoc Med. 2011]
  - Recurrent abdominal pain in children and adolescents - a survey ai [Psychosoc Med. 2011]
  - Mental strain among staff at medical rehabilitation clinics in G [Psychosoc Med. 2011]
- See all (72)...

Find related data

Database: Select  
Find items

Search details

"Psychosoc Med"[Journal] OR  
"psychosoc med"[All Fields]  
Search See more...

## Zugriffsstatistik - Journal "GMS Psycho-Social-Medicine"

	2010-01	2010-02	2010-03	2010-04	2010-05	2010-06	2010-07	2010-08	2010-09	2010-10	2010-11	2010-12	2011-01
Zugriffszahlen ungefiltert	3.625	3.033	4.060	3.211	4.060	2.438	2.764	2.634	3.134	3.947	3.580	3.150	3.340
Zugriffszahlen gefiltert		1.083	1.262	1.191	1.101	1.059	1.068	901	1.498	1.371	1.418	1.003	1.175
Artikelzahl	62	62	62	63	63	64	64	66	68	68	68	69	70

Gesamtzahl ungefilterte Zugriffe 2010:

39.636

Gesamtzahl ungefilterte Zugriffe 2011:

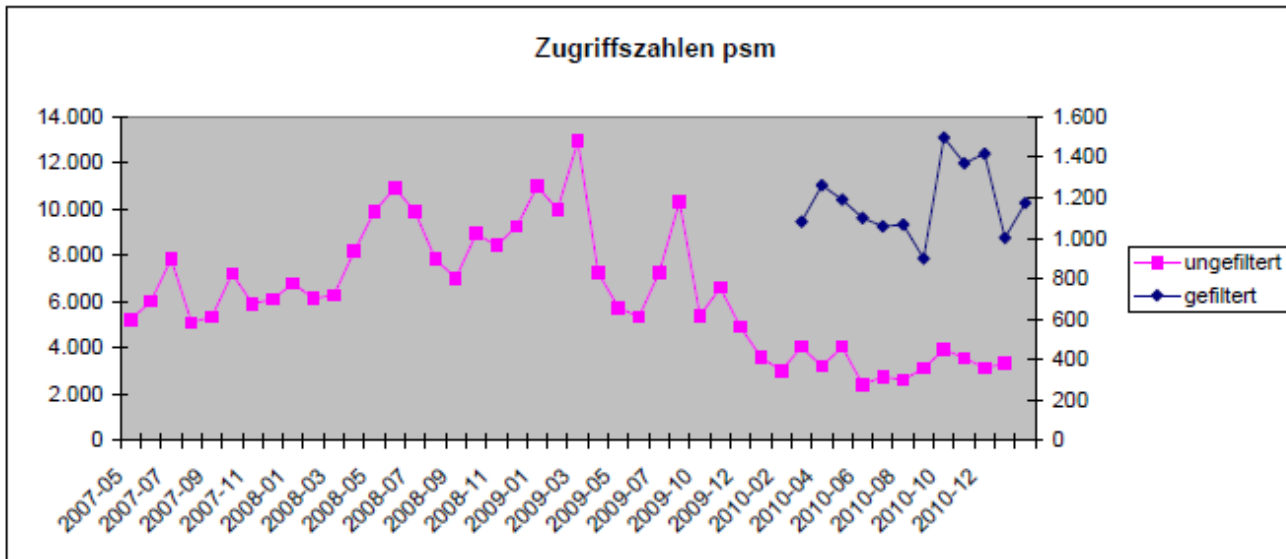
3.340

Gesamtzahl gefilterte Zugriffe 2010:

12.955

Gesamtzahl gefilterte Zugriffe 2011:

1.175

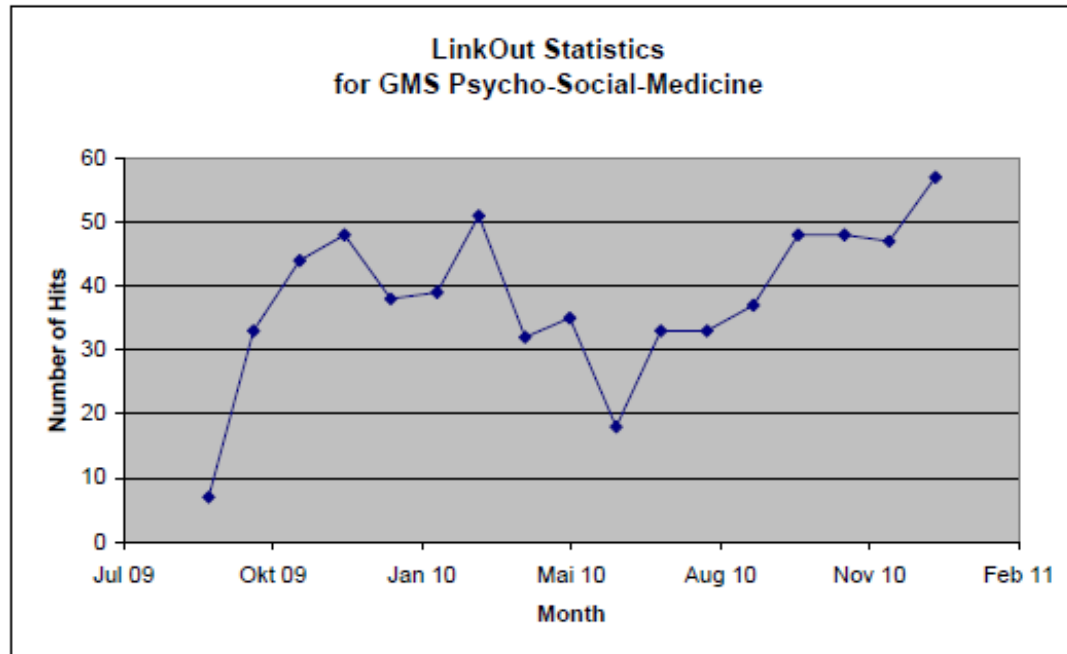


## LinkOut-Statistik für p-s-m

Zugriffe aus PubMed auf den jeweiligen Artikel im gms-Portal

Month	Hits
Sep 09	7
Okt 09	33
Nov 09	44
Dez 09	48
Jan 10	38
Feb 10	39
Mrz 10	51
Apr 10	32
Mai 10	35
Jun 10	18
Jul 10	33
Aug 10	33
Sep 10	37
Okt 10	48
Nov 10	48
Dez 10	47
Jan 11	57

Total: 648

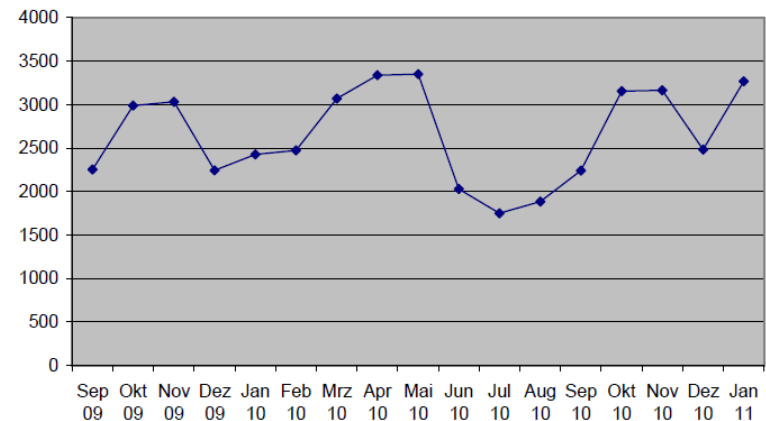




# Zugriffe auf psm-Artikel im Volltextrepositary von Pubmed Central

Date	Articles	HTML Full Text	Article PDF	Other pages	Total			
Sep. 09	58	831	310	1112	2253			
Okt. 09	58	1644	254	1090	2988			
Nov. 09	61	1808	254	970	3032			
Dez. 09	62	1354	144	746	2244			
Jan. 10	62	1526	174	728	2428			
Feb. 10	62	1568	196	709	2473			
Mrz. 10	62	1971	403	695	3069			
Apr. 10	63	2182	540	616	3338			
Mai. 10	63	2278	487	585	3350			
Jun. 10	63	1157	540	333	2030			
Jul. 10	64	962	530	260	1752			
Aug. 10	64	978	613	294	1885			
Sep. 10	64	1187	738	317	2242			
Okt. 10	66	1841	631	682	3154			
Nov. 10	66	2059	398	709	3166			
Dez. 10	69	1712	349	423	2484			
Jan. 11	69	2247	389	631	3267			

PMC (auch UK und Canada): Zugriffe auf psm



## Top 10 der bei gms abgerufenen p-s-m-Artikel

No.	ID	URL (HTML-Version)	monatl. Mittelwert aller Zugriffe	Gesamt-Zugriffszahl	PMC Rang
01	Rustin TA, Using artwork to understand the experience of mental illness: Mainstream artists and Outsider artists. <i>GMS Psychosoc Med</i> 2008;5:Doc07 (Review)	<a href="http://www.egms.de/en/journals/psm/2008-5/psm000052.shtml">http://www.egms.de/en/journals/psm/2008-5/psm000052.shtml</a>	271	8395	1
02	Kyziridis TC, Post-operative delirium after hip fracture treatment: a review of the current literature. <i>GMS Psychosoc Med</i> 2006;3:Doc01 (Review)	<a href="http://www.egms.de/en/journals/psm/2006-3/psm000021.shtml">http://www.egms.de/en/journals/psm/2006-3/psm000021.shtml</a>	270	16194	4
03	Nübling M, Measuring psychological stress and strain at work - Evaluation of the COPSOQ Questionnaire in Germany. <i>GMS Psychosoc Med</i> 2006;3:Doc05	<a href="http://www.egms.de/en/journals/psm/2006-3/psm000025.shtml">http://www.egms.de/en/journals/psm/2006-3/psm000025.shtml</a>	224	11645	2
04	Hardt J, The symptom checklist-27-plus (SCL-27-plus): a modern conceptualization of a traditional screening instrument. <i>GMS Psychosoc Med</i> 2008;5:Doc08	<a href="http://www.egms.de/en/journals/psm/2008-5/psm000053.shtml">http://www.egms.de/en/journals/psm/2008-5/psm000053.shtml</a>	216	6684	-
05	Körner M, Analysis and development of multiprofessional teams in medical rehabilitation. <i>GMS Psychosoc Med</i> 2008;5:Doc01	<a href="http://www.egms.de/en/journals/psm/2008-5/psm000046.shtml">http://www.egms.de/en/journals/psm/2008-5/psm000046.shtml</a>	192	6722	7
06	Albrecht U, Diagnostic instruments for behavioural addiction: an overview. <i>GMS Psychosoc Med</i> 2007;4:Doc11 (Review)	<a href="http://www.egms.de/en/journals/psm/2007-4/psm000043.shtml">http://www.egms.de/en/journals/psm/2007-4/psm000043.shtml</a>	189	7572	3
07	Johansson Blight K, Persson JO, Ekblad S, Ekberg J, Medical and licit drug use in an urban/rural study population with a refugee background, 7-8 years into resettlement. <i>GMS Psychosoc Med</i> 2008;5:Doc04	<a href="http://www.egms.de/en/journals/psm/2008-5/psm000049.shtml">http://www.egms.de/en/journals/psm/2008-5/psm000049.shtml</a>	169	5734	-
08	Morfeld M, The assessment of mood at workplace - psychometric analyses of the revised Profile of Mood States (POMS) questionnaire. <i>GMS Psychosoc Med</i> 2007;4:Doc06	<a href="http://www.egms.de/en/journals/psm/2007-4/psm000038.shtml">http://www.egms.de/en/journals/psm/2007-4/psm000038.shtml</a>	167	7518	8
09	Berth H, The Amsterdam Preoperative Anxiety and Information Scale (APAIS) - the first trial of a German version. <i>GMS Psychosoc Med</i> 2007;4:Doc01	<a href="http://www.egms.de/en/journals/psm/2007-4/psm000033.shtml">http://www.egms.de/en/journals/psm/2007-4/psm000033.shtml</a>	167	8017	6
10	Körner M, Mental strain among staff at medical rehabilitation clinics in Germany. <i>GMS Psychosoc Med</i> 2011; 8:Doc01	<a href="http://www.egms.de/en/journals/psm/2011-8/psm000070.shtml">http://www.egms.de/en/journals/psm/2011-8/psm000070.shtml</a>	154	154	-

# Diskussion und Ausblick

- Zeitschrift ist bekannt, recht gut eingeführt
- Kooperationen zwischen Herausgebern, Fachgesellschaften und Verlag klappen gut.
- Durch Pubmed-Listung wesentlich bessere Sichtbarkeit.
- Artikelzahl soll weiter gesteigert werden.
- Problem Impact-Faktor
- Problem z.T. langsame Reviewer, manchmal schwierig, passende Reviewer in den Fachgesellschaften zu finden.
- Finanzielle Entwicklung (Erhöhung von Beiträgen, Autorengebühren)